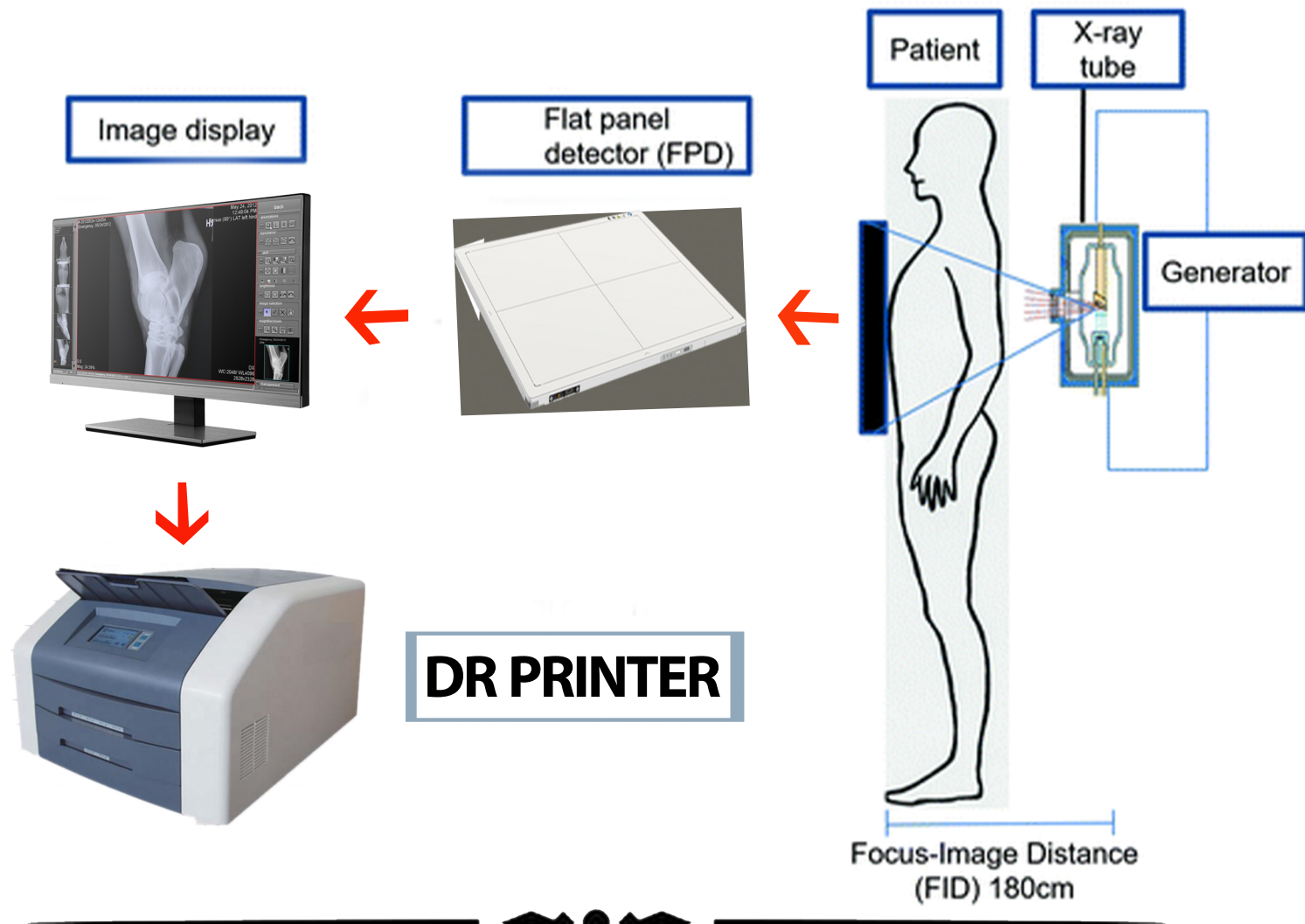


Option

Upgrade X-ray to Digital X-ray (DR)

Direct Digital Radiography (DDR) System



DR system consist of :

- 1- flat panel dectector
- 2- rechargeable battery
- 3-pc



Tel : 07736768000

Website : www.almanara_iq.com

بغداد / باب المعظم / خلف جامع عادلة خاتون

المناصرة

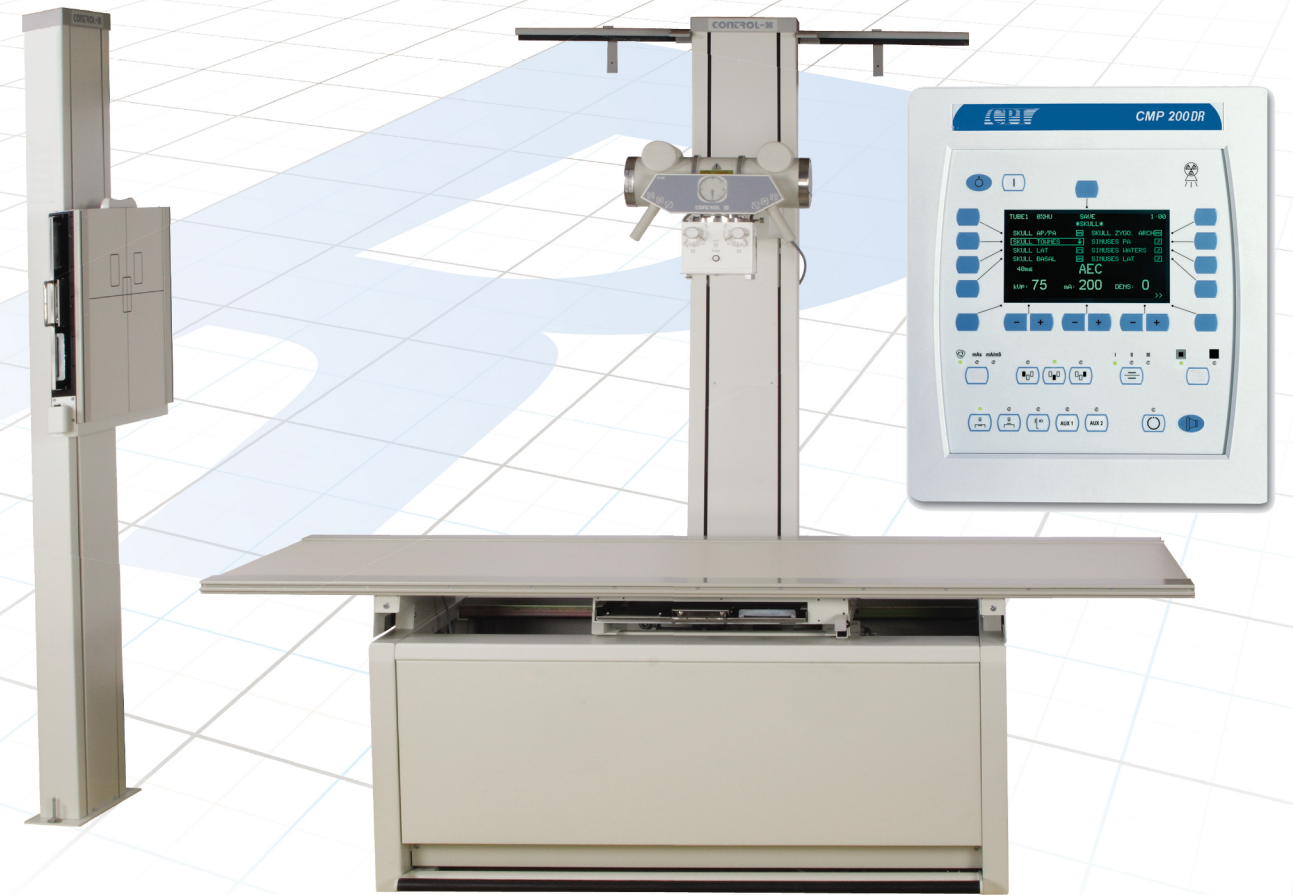


المناصرة

RADIOLOGIX

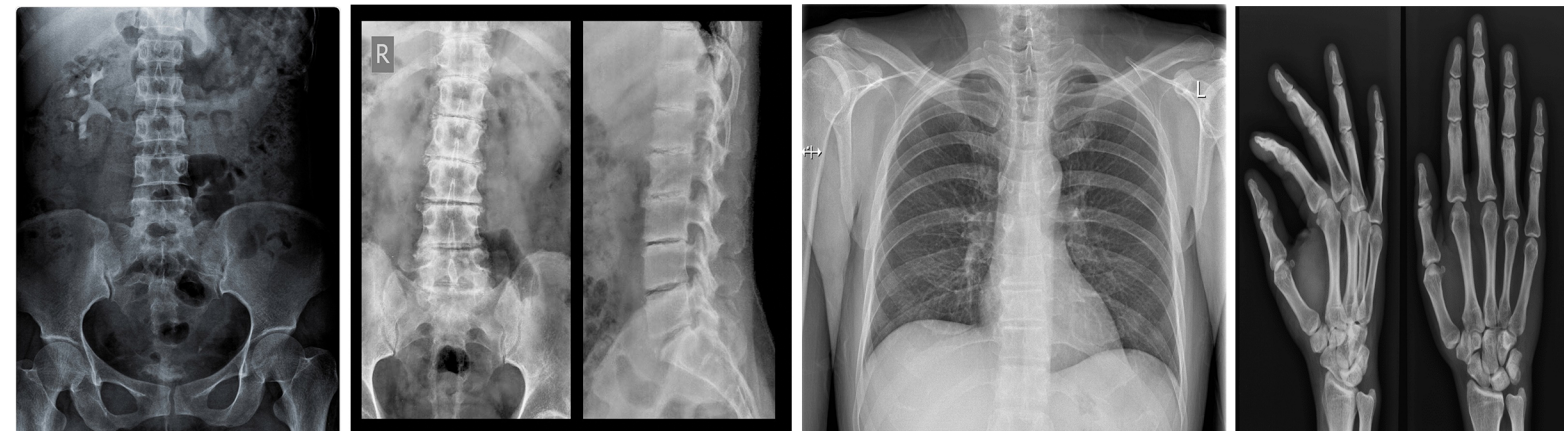
High Frequency Radiographic System

Simplicity, Performance and Safety



The RadiologiX radiographic system offers performance, quality and durability at an exceptional price. The compact design of the RadiologiX system is perfect for small x-ray rooms.

By offering a unique combination of hospital grade components and value, the RadiologiX system is the logical choice when in the search for a complete system in a compact package.



- ◆ CMP-200 40 LNC (Generator)

CMP 200, 40kW, 150kV, 3x400V, LSS, Console

200 kHz, 40kW microprocessor controlled single tube, three phase high frequency generator. Anatomically programmed APR regions. Rated at 150kV/200mA, 100kV/320mA, 80kV/400mA. Exposure time: 0.001sec-6sec. **10-500mA, 0.5-600mAs.**

- ◆ 2210 (table)

STYLIX-22 rad table with four-way table top

Non-tilting radiographic bucky table with 4-way floating top. The table top travels 110cm (44") longitudinally and 24cm (9 1/2") horizontally with a table-top film distance of 6cm (2.4"). Length of the table top: 220cm (86 2/3"), width: 81 cm. Table top height is 75 cm.

- ◆ B-13140 (Bucky table)

CXB-17 Bucky

Non-size sensing 43cm x 43cm (17"x17") Bucky for oscillating grid.

- ◆ B-13520-DC (Tray of table)

CXT-17-DC cassette tray / dual cutout

Non-size sensing cassette tray for the 43 x 43cm (17" x 17") CXB-17 Bucky or the CX-GC-17 Grid Cabinet. Dual cutout for easy cassette removal.

- ◆ GR-21510M17 (Grid of table)

21510M17 Grid

"17 1/4 x 18 7/8"" 215LPI (85 Lam/cm), 10:1, focus 34-44"" to fit grid cabinet (removeable)"

- ◆ TS-6860 (table stand)

TS 99 CHL tube stand with long arm

- ◆ XT-E7242X (x-ray tube)

E7242X X-Ray Tube

125kVp 200KHU, TM Target. Standard Speed X-Ray Tube. 0.6/1.5 Focal Spots, 14deg. Target Angle. 19.8/52kW (17/47kW at 50 Hz) on 3-phase Standard Speed.
Trunnion mount for x-ray tubes with 3" housings. 100mm distance from mounting plate.

- ◆ SR-M-38 (LL) (Collimator)

M-38 collimator

Multi-layer, square-field collimator. Max. radiation protection 150 kVp. Rotating mounting flange. LED light, laser center light, ruler, plastic cased CE marked.

- ◆ WS-3120 (wall bncky) or (Chest stand

WS 99 CH Wall Bucky Stand

Vertical Bucky wall stand. Counter balanced for 43cm x 43cm (17" x 17") Grid Cabinet or Bucky, with vertical electric locks. Extra trim weights front panel and accessory rails included. Space saving design.

- ◆ B-13520-DC (tray of chest stand)

CXT-17-DC cassette tray / dual cutout

Non-size sensing cassette tray for the 43 x 43cm (17" x 17") CXB-17 Bucky or the CX-GC-17 Grid Cabinet. Dual cutout for easy cassette removal.

- ◆ **tube stand with long arm**

tube stand with extended floor rail and extended tube arm.

* floor-to-wall mounting tube stand.

* Electrical locks for vertical and longitudinal positioning.

* 360° tube rotation with electric locks.

195 cm longitudinal travel.

* Very quiet, "Easy-glide" effortless operation with special bearing systems.

*Fully counter-balanced, double rope system for safety.

*Certified manual collimator